

## MANUALE D'ISTRUZIONI PLAFONIERA 3CCT IP40



SIDNEY

### Specifiche tecniche:

	MISURE	W	Lumen	AC/Hz	3CCT (SWITCH)	CRI	α	TEMP. LAVORO	DURATA	FLICKER	DIMM.	CLASSE	IK
IPC18HS	Ø220*35mm	18	1850	AC170-240V Hz 50/60	3000/4000/6500K	80	120°	-20°+40°	25000 H	FREE	NO	II	08
IPC24HS	Ø290*44mm	24	2600	AC170-240V Hz 50/60	3000/4000/6500K	80	120°	-20°+40°	25000 H	FREE	NO	II	08
IPC36HS	Ø350*45mm	36	4000	AC170-240V Hz 50/60	3000/4000/6500K	80	120°	-20°+40°	25000 H	FREE	NO	II	08
IPC50HS	Ø450*55mm	50	5700	AC170-240V Hz 50/60	3000/4000/6500K	80	120°	-20°+40°	25000 H	FREE	NO	II	08

Plafoniere a LED rotonde installabili facilmente a parete/soffitto.  
Corpo e diffusore V2 autoestinguente e Anti-UV, resistente alla prova del filo  
incandescente per 650°C.  
Resistente agli urti.

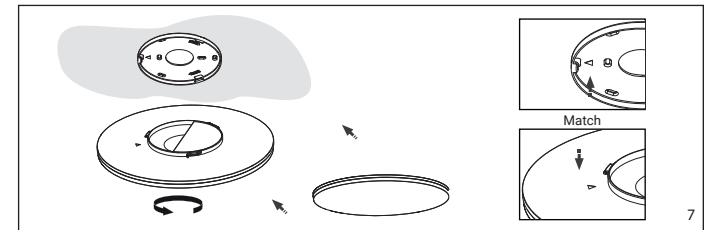
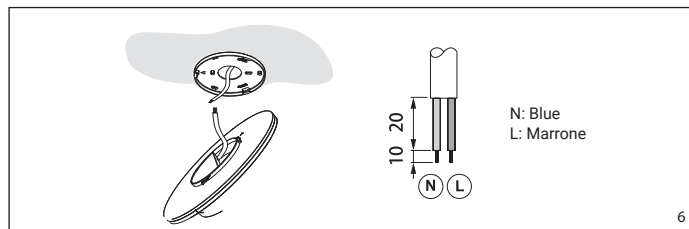
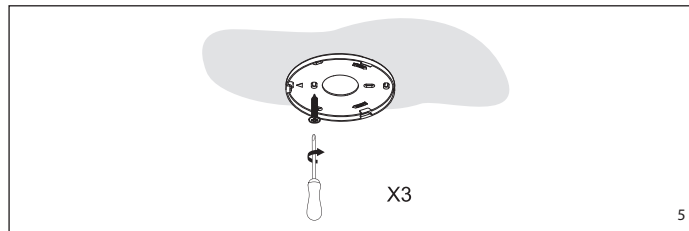
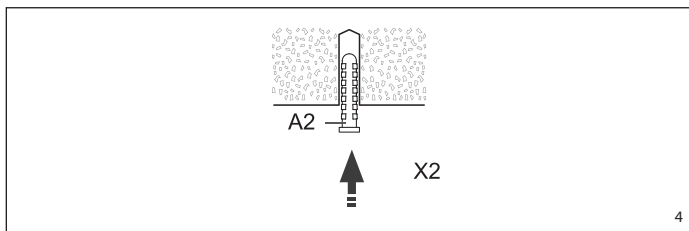
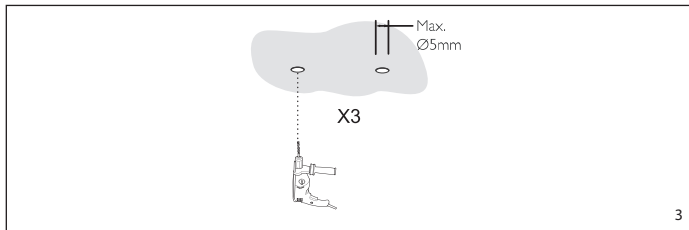
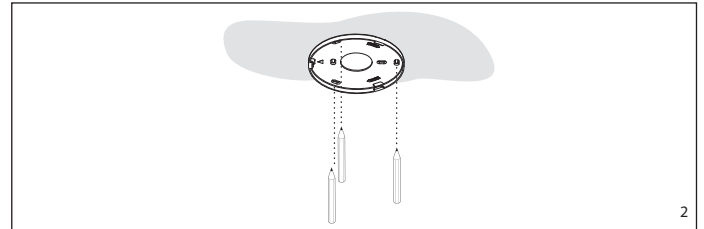
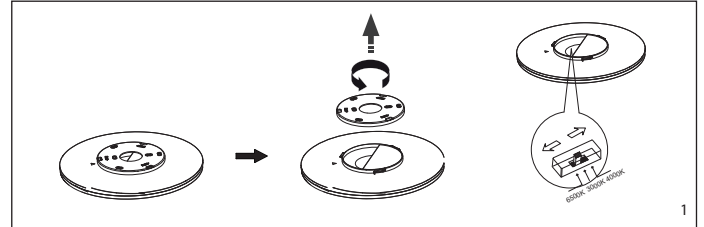
### ⚠ ATTENZIONE

Si raccomanda di rivolgersi a un elettricista qualificato per installare il prodotto.

Si raccomanda di non toccare il prodotto quando è acceso.

In caso di malfunzionamento, staccare la lampada dall'alimentazione.  
Si raccomanda di rivolgersi a un elettricista e di non provare a riparare la lampada da soli.

### MONTAGGIO



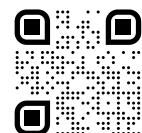
### Informazioni sul riciclaggio in conformità con le direttive RAEE e batterie



Solo Europa

Il prodotto/batteria è contrassegnato con uno dei simboli di riciclaggio sopra indicati. Questo indica che a fine vita il prodotto/batteria, dovrà essere smaltito/a separatamente in appropriati luoghi di raccolta e non con i normali rifiuti domestici.

CE RoHs



**IPERLUX®**  
www.iperlux.com  
info@iperlux.com

### INSTRUCTION MANUAL CCT LED CEILING LAMP IP40



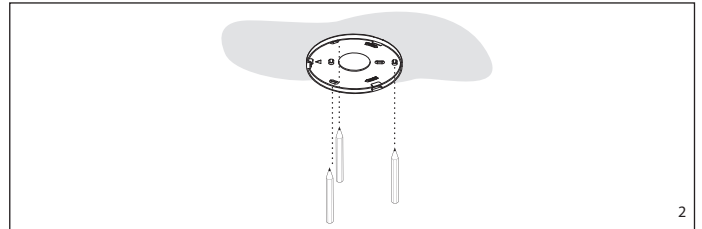
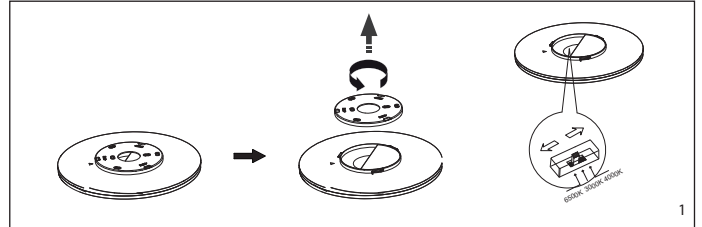
SIDNEY

It is recommended to contact a qualified electrician to install the product.

It is recommended not to touch the product when it is turned on.

In case of malfunction, disconnect the lamp from the power supply. It is recommended to contact an electrician and not try to repair the lamp yourself.

### MOUNTING



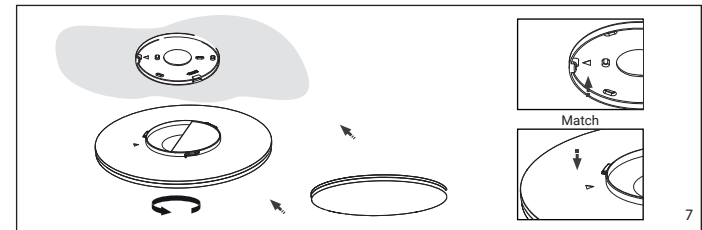
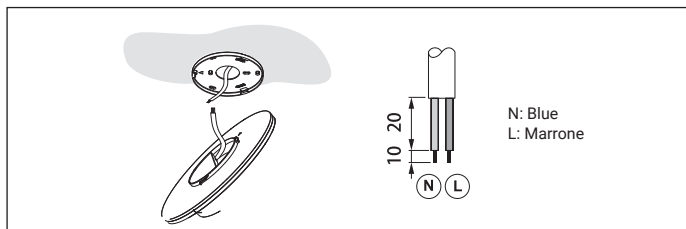
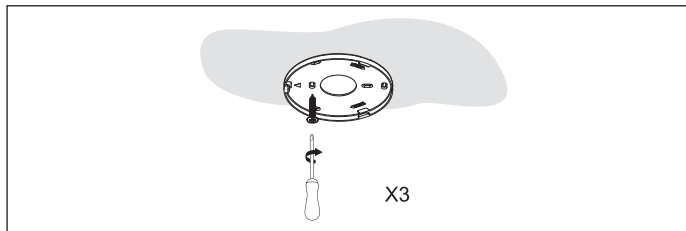
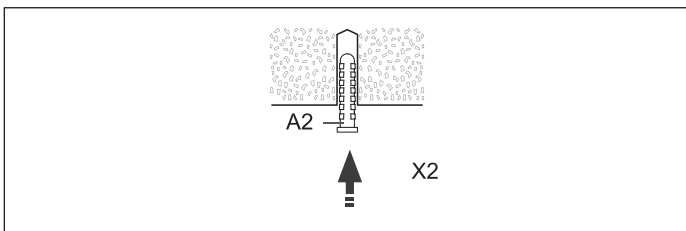
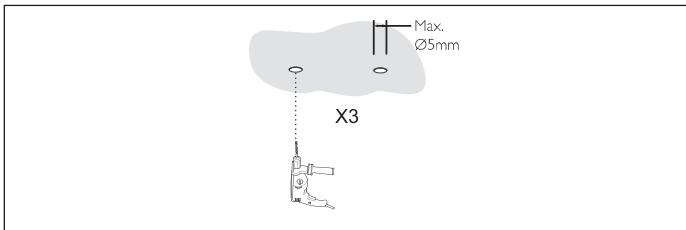
### Specifications and Technical Data sheet :

	SIZE	W	Lumen	AC/Hz	3CCT (SWITCH)	CRI	α	AMB. TEMP.	LIFETIME	FLICKER	DIMM.	CLASS	IK
IPC18HS	Ø220*35mm	18	1850	AC170-240V Hz 50/60	3000/4000/6500K	80	120°	-20°+40°	25000 H	FREE	NO	II	08
IPC24HS	Ø290*44mm	24	2600	AC170-240V Hz 50/60	3000/4000/6500K	80	120°	-20°+40°	25000 H	FREE	NO	II	08
IPC36HS	Ø350*45mm	36	4000	AC170-240V Hz 50/60	3000/4000/6500K	80	120°	-20°+40°	25000 H	FREE	NO	II	08
IPC50HS	Ø450*55mm	50	5700	AC170-240V Hz 50/60	3000/4000/6500K	80	120°	-20°+40°	25000 H	FREE	NO	II	08

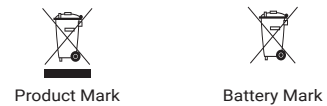
LED ceiling lamps round, easy to install on the wall or ceiling.  
ANTI-UV and V2 Self-extinguishing housing and diffuser, glow wire tested at 650°C.  
Resistant to impacts.

1

2



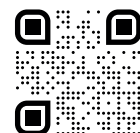
### Recycling Information in Accordance with the WEEE and Battery Directives



Europe only

The product/battery is marked with one of the above recycling symbols. It indicates that at the end of the life of the product/battery, you should dispose of it separately at an appropriate collection point and not place it in normal domestic waste stream.

CE RoHS



**IPERLUX®**  
www.iperlux.com  
info@iperlux.com